



Nothing but **HEAVY DUTY.**®



MILWAUKEE TOOL COVID-19 RESOURCE GUIDE

4/9/20



PROUDLY SUPPORTS



Partnerships are easy when both sides are experiencing growth and success, but the value is truly exemplified when we overcome obstacles together. As we continue to navigate this quickly evolving and unprecedented situation, we want to assure you that Milwaukee Tool will be here to offer support in any capacity we can. This document will provide resources and updates from Milwaukee Tool to help you manage through these challenging times.

TABLE OF CONTENTS

- **TOOL CLEANING BEST PRACTICES**
- **OPERATIONS PROTOCOLS**
- **DIGITAL TRAINING**
 - **WEBINARS**
 - **TOOL OVERVIEW VIDEOS**
 - **MILWAUKEE GRID™ - APPRENTICE CONNECTION**
- **SHIPPING & INVENTORY UPDATES**
- **#TOGETHERweSTAND CAMPAIGN**
- **STAYING IN CONTACT WITH MILWAUKEE TOOL**

START BY CLICKING THE LINK BELOW

#TOGETHERweSTAND



TOOL CLEANING BEST PRACTICES MILWAUKEE TOOL COVID-19 RESOURCE GUIDE

Please review our Tool Cleaning Best Practices document attached to this email. A Spanish version is also available, upon request. Reach out to your Milwaukee Tool representative for more.



CLEANING OF TOOLS TO HELP PREVENT SPREAD OF COVID-19

Should a tool need to be cleaned that does not have blood or visible bodily fluids on it, Milwaukee® recommends the following protocol. This protocol is subject to the recommendations of the Centers for Disease Control ("CDC"), OSHA, and those of State and Local health departments. Please follow applicable guidelines of these agencies.

- People handling tools should wash their hands or use a proper hand sanitizer before and after use to help prevent contamination.
- People handling tools should be properly trained and protected using necessary Personal Protective Equipment (PPE).
- Clean tools with mild soap, a clean damp cloth, and, as needed, an approved diluted bleach solution only. Certain cleaning agents and solvents are harmful to plastics and other insulated parts and shouldn't be used.
- Milwaukee® does not recommend cleaners that have conductive or corrosive materials, especially those with ammonia. Some of these include gasoline, turpentine, lacquer thinner, paint thinner, chlorinated cleaning solvents, ammonia and household detergents containing ammonia.
- Never use flammable or combustible solvents around tools.

CLEANING OPTIONS:

1. **MILD SOAP & REST**
 - If no blood was present on the product, it can be cleaned with mild soap and a damp cloth to remove the fluids and then left to rest for 3 days. This is based on CDC advisement that the virus may live on plastic surface for up to 72 hours, which suggest that the virus would no longer be harmful after the resting period. After this, the tool can be cleaned again.
*Recommended for batteries
2. **MILD SOAP & DILUTED BLEACH SOLUTION**
 - If no blood was present on the product, it can be cleaned with a mild soap and damp cloth to remove dirt and grease and then decontaminated with a diluted bleach solution, which is consistent with CDC advice. The full diluted bleach cleaning procedure can be found below.
*Not recommended for batteries

PROCEDURE

1. Clean the product surface with mild soap and water to remove dirt and grease.
2. Dip a clean cloth into the dilute bleach solution.
3. Wring out the cloth so it is not dripping wet.
4. Gently wipe each handle, grasping surfaces, or outer surfaces with the cloth, using care to ensure liquids do not flow into tool.
5. No other cleaning material should be used as the diluted bleach solution should never be mixed with ammonia or any other cleanser.
6. Allow the surface to dry naturally.
7. The cleaner should avoid touching their face with unwashed hands and should immediately wash their hands after this process.

A properly diluted bleach solution can be made by mixing:

- 5 tablespoons (1/3rd cup) bleach per gallon of water; or
- 4 teaspoons bleach per quart of water

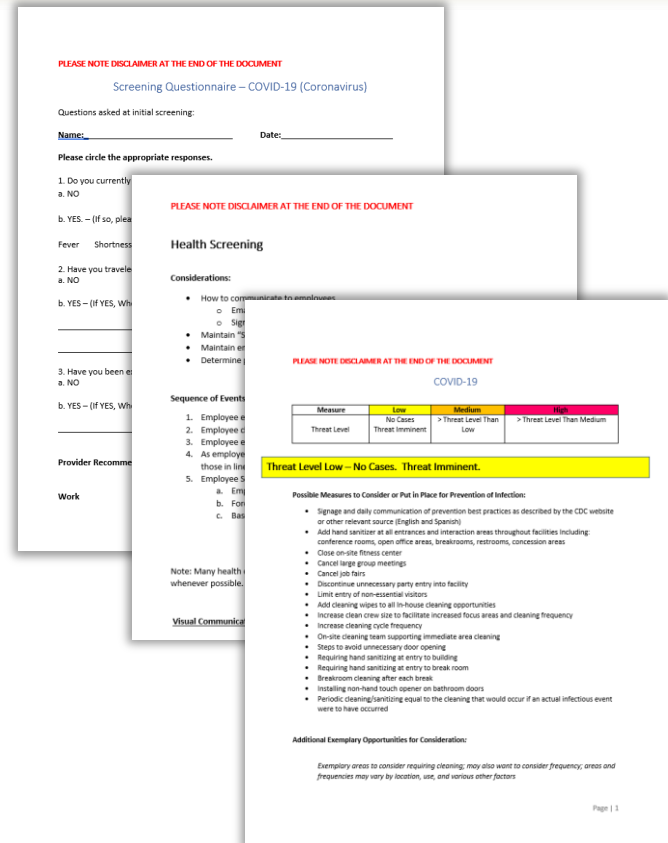
NOTE: If blood was on the product, advance cleaning is needed. Follow established Bloodborne Pathogen protocols for your business. Under OSHA requirements, anyone required to perform this type cleaning should be trained in Bloodborne Pathogens and the use of the necessary PPE for this work.



OPERATIONS PROTOCOLS MILWAUKEE TOOL COVID-19 RESOURCE GUIDE

Please be sure to review the additional Operations Protocol resources attached to this email, including:

- **HEALTH SCREENING PLANNING FORM**
- **HEALTH PRE-SCREENING QUESTIONNAIRE**
- **POTENTIAL CONSIDERATIONS FOR DOCUMENTING PROCEDURES**



****NOTE** – These are examples of some potential information that may be useful for an Essential Business (as defined under the applicable local, state, or federal law) to consider having in place with regard to COVID-19 planning, procedures, and mitigation steps, etc. This document and the information provided herein does not, and is not intended to, constitute legal advice; instead, all information, content, and materials herein are for general informational purposes only. Information in this document may not constitute the most up-to-date legal or other information. Additionally, information provided herein is not intended to be exhaustive or to satisfy all applicable laws, regulations, and recommended practices.

Readers of this document should contact experts to obtain advice with respect to any particular pandemic matter. No reader or user of this document should act or refrain from acting on the basis of information on this document without first seeking legal advice from counsel in the relevant jurisdiction. Only your individual attorney and/or experts can provide assurances that the information contained herein – and your interpretation of it – is applicable or appropriate to your particular business or situation.

All liability with respect to actions taken or not taken based on the contents of this document are hereby expressly disclaimed. The content in this document is provided "as is;" no representations are made that the content is error-free.

Readers of this document should follow all governmental, CDC, WHO, or other applicable rules and guidelines.



WEBINAR OPPORTUNITIES

MILWAUKEE TOOL COVID-19 RESOURCE GUIDE

To ensure we continue to aid you during these challenging times, we want to provide a list of educational webinars for your association and contractors. Available topics include the following: Safety, Technology, and Leadership. Please see the available list of 7 options below with a general overview. Contact your Milwaukee representative for more information and to schedule a webinar.

SAFETY

Presenter: Raffi Elchemmas - National Health and Safety Manager

1. Milwaukee Health and Safety Overview:

- Current Covid-19 Tool cleaning protocol
- Showcase common jobsite injuries in the construction industry
- Outline innovations in health & safety to address them with Milwaukee solutions
- Showcase how Milwaukee solutions fit into the Safety Hierarchy of Controls

2. Ergonomic Safety:

- Showcase the causes and risk factors of ergonomic injuries in the construction industry
- Provide a step by step process to reduce and recognize ergonomic injuries on the jobsite
- Discuss recommended ways of preparing for tooling tasks to minimize risk for ergonomic injury
- Identify traits of tools that help you achieve that goal by using cutting edge scientific measurement equipment to quantify the levels of ergonomic risk of a tool

3. Protection From Silica Exposure:

- Review what silica is, who is at risk, and what are the risks
- Discuss the OSHA regulation, background, and best practices to protect against silica exposure
- Review Milwaukee Table 1 compliant solutions

TECHNOLOGY

Presenter: Tauhira Ali - Sr. Manager of Construction Technology

4. Overview of Construction Technology:

- Discuss how industry leaders & early adopters view emerging tech solutions
- Determine evaluation metrics for the unique needs of your organization
- Position your team to learn, elevate knowledge, and cultivate expertise
- Educate and increase engagement across all levels of your organization

LEADERSHIP

Presenter: Tauhira Ali – Sr. Manager of Construction Technology

5. Diversity, Culture, & Innovation:

- Develop an atmosphere of inclusion throughout your organization
- Leverage multiple viewpoints to create a resilient company strategy
- Engage multi-generational leaders to investigate and create best practices
- Build a robust innovation culture to uniquely serve the needs of your team

6. Recruiting, Retaining Employees:

- Generate a strategy for attracting new workers to your company
- Accelerate the training and growth plans for current employees, help them to thrive
- Build a culture of loyalty and pride to keep your team engaged and bring others to the table
- Celebrate different perspectives and backgrounds while creating a safe and authentic work environment

7. Women's Leadership:

- In 2018, there were almost 76 million women in the US labor force, representing 46.9% of the total workforce
- In the same year, 80% of contractors across the country reported trouble hiring skilled workers
- Women represent 9.9% of the workforce in construction but only 3.4% of employees in the field
- Discuss what it will take for women to represent a larger percentage of the industry and the effects of this on construction's workforce shortage.
- Learn how creating a culture of inclusion will drive profit for your company's bottom line



DIGITAL TOOL TRAINING

MILWAUKEE TOOL COVID-19 RESOURCE GUIDE

We are committed to making sure your employees stay safe and efficient on the job, and ensuring your apprentices on site have the best education we can provide. We are excited to introduce digital training videos on the following tools. Click the links or scan the QR codes below to view.

[Impact Driver](#)



[Drill Driver](#)



[Knockout Tool](#)



[6T Crimper](#)



[Cut-Off Machine](#)



[Cable Stripper](#)



[Rotary Hammer Drill](#)



[Grinder](#)



[Digital Torque Wrench](#)



[Band Saw](#)



[Sawzall](#)



[Threaded Rod Cutter](#)



[ANGLER Fish Tape](#)



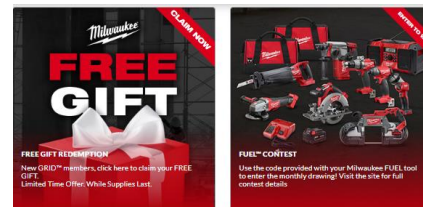
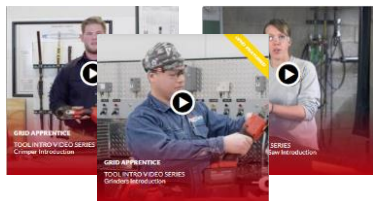
[Cable Cutter](#)



[Pipe Threader](#)



Apprentices can learn about their trades from home! Launched last fall, The Milwaukee GRID™ Apprentice Connection is a first of its kind apprentice resource designed to add value to their education and future careers. When members sign up for **free**, they receive exclusive access to:



Expanding Video Resource Library

They can learn about tools they use daily!

Peer Interaction

*Connect with & learn from other apprentices!
Facebook Search "GRID Apprentice Connection"*

Contests & Giveaways

They can win tools & accessories to use on the job!



Jump on THE GRID™

[CLICK HERE](#)

OR





SHIPPING AND INVENTORY UPDATE

MILWAUKEE TOOL COVID-19 RESOURCE GUIDE



Our distribution center is still operating at 100%. Expect normal turn times on orders.

- Any COVID-19 related emergency order will be processed within 1 hour. Reach out to your local representative for assistance in expediting your order.



Stock levels for our M12 and M18 cordless systems, jobsite lighting, accessories, hand tool and storage products are strong. We have what you need to get the job done.



****NOTE:** Due to the global surge in demand for PPE products brought on by COVID-19, our inventories on respirators have been depleted. We are working diligently to correct this situation, and remain committed to working with our distributor partners to prioritize shipments to healthcare workers, first responders, and our core tradespeople who continue working around the clock to keep the country operating. **All other PPE is currently in stock.**



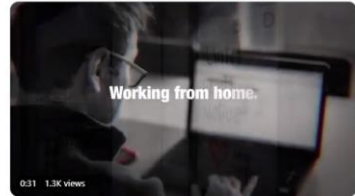
#TOGETHERweSTAND CAMPAIGN MILWAUKEE TOOL COVID-19 RESOURCE GUIDE

We are all in this together. Milwaukee Tool is donating all remaining inventory of N95 respirators to hospitals in need. Connect with us and share your example of helping those on the front lines using **#TOGETHERweSTAND**.

Facebook profile for @MilwaukeeTool. The profile picture is the Milwaukee logo. The cover photo shows a white N95 respirator with the Milwaukee logo on it. The bio reads: "Milwaukee Tool North America @MilwaukeeTool". The post shows a white N95 respirator and a forklift in a warehouse. The caption says: "During these uncertain times all of us are doing our part to keep each other safe and healthy. For many that means taking steps to stay at home, for others it means putting their lives at risk on the front lines. We are doing our part by donating all remaining inventory of N95 respirators to hospitals in need. Together, we can get through this. #TOGETHERweSTAND".

Instagram profile for @MilwaukeeTool. The profile picture is the Milwaukee logo. The bio reads: "milwaukeeetool Official Instagram of Milwaukee Tool #NothingButHeavyDuty #MilwaukeeTool tap.bio/@milwaukeeetool". The post shows a collage of Milwaukee tools including a trade show booth, hand tools, light duty tools, new products, accessories, power tools, and NPS19. The caption says: "During these uncertain times all of us are doing our part to keep each other safe and healthy. For many that means taking steps to stay at home, for others it means putting their lives at risk on the front lines. We are doing our part by donating all remaining inventory of N95 respirators to hospitals in need. Together, we can get through this. #TOGETHERweSTAND".

Twitter profile for @MilwaukeeTool. The profile picture is the Milwaukee logo. The bio reads: "Milwaukee Tool Official Twitter of Milwaukee Tool #NothingButHeavyDuty". The post shows a collage of Milwaukee tools. The caption says: "During these uncertain times all of us are doing our part to keep each other safe and healthy. For many that means taking steps to stay at home, for others it means putting their lives at risk on the front lines. Together, we can get through this. #TOGETHERweSTAND".





CONNECTING WITH MILWAUKEE MILWAUKEE TOOL COVID-19 RESOURCE GUIDE

Despite travel restrictions, the continued support of our sales team doesn't change. Please reach out to your Milwaukee Tool representative for the latest information regarding new product announcements, current promotions or anything else you need. We are just one phone call or email away.

In addition, Milwaukee Tool's *Heavy Duty News* gets you the latest updates and information sent directly to your inbox!

TO SIGN UP:

- Visit the [Milwaukee Tool](#) website
- Click 'Sign Up' in the top right corner



• OR

